

OFFICE PROPERTY // FOR LEASE

SECOND-STORY 6,517 SF OFFICE SUITE IN DOWNTOWN NORTHVILLE

311 E MAIN ST
NORTHVILLE, MI 48167



- 6,517 SF Second-story Office Suite
- Designed & Furnished by Interior Environments
- Open Space & 13 Offices
- Indoor Parking Available
- Great location in Downtown Northville



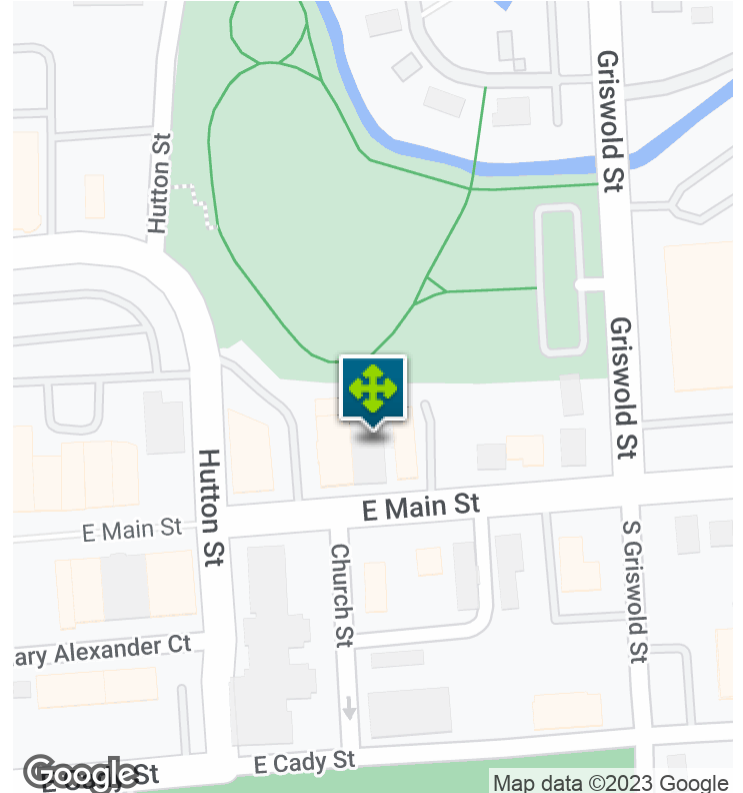
P.A. COMMERCIAL
Corporate & Investment Real Estate

26555 Evergreen Road, Suite 1500
Southfield, MI 48076
248.358.0100

pacommercial.com

311 E MAIN ST, NORTHVILLE, MI 48167 // FOR LEASE

EXECUTIVE SUMMARY



Lease Rate

**\$26.00 SF/YR
(MG)**

OFFERING SUMMARY

Building Size:	13,116 SF
Available SF:	6,517 SF
Lot Size:	0.15 Acres
Year Built:	2008
Renovated:	2018
Zoning:	CBD
Market:	Detroit
Submarket:	Southern I-275 Corridor

PROPERTY OVERVIEW

311 E Main Street presents a rare opportunity to lease a professionally designed second-story office suite in downtown Northville! This corner suite was previously occupied by Sotheby's International Realty and was professionally designed and furnished by Interior Environments. The available second-story suite features 7 private offices and 6 shared office suites that can be converted to single offices, a kitchenette, and an open area/waiting room. The lease also includes the option of indoor private parking!

LOCATION OVERVIEW

Premier location in the heart of downtown Northville. This office building is across the street from Starbucks and is adjacent to shopping, restaurants, and local business service. Quick access to 8 Mile Rd/I-275 Corridor

PROPERTY HIGHLIGHTS

- 6,517 SF Second-story Office Suite
- Designed & Furnished by Interior Environments
- Open Space & 13 Offices
- Indoor Parking Available
- Great location in Downtown Northville



P.A. COMMERCIAL
Corporate & Investment Real Estate

Matthew Schiffman CEO/MANAGING MEMBER
D: 248.281.9907 | C: 248.943.6449
matt@pacommercial.com

Mike Gunn SENIOR ASSOCIATE
D: 248.331.0202 | C: 248.924.7499
mike@pacommercial.com

311 E MAIN ST, NORTHVILLE, MI 48167 // FOR LEASE

CITY INFORMATION



LOCATION DESCRIPTION

The City of Northville is a distinctive community of approximately 6,000 residents located on the western edge of metro Detroit in 2.2 square-mile area. It is a short drive (about 30 minutes) from downtown Detroit and downtown Ann Arbor. City roads are well laid out with easy access to nearby major freeways, including I-275, M-14, I-696, and I-96.

Northville has the highest median household income in Michigan and the median home value is \$392,078. Northville was also voted one of the best places to live and raise a family in the state. Northville has a thriving business community with a blend of professional services, retail and cultural venues.

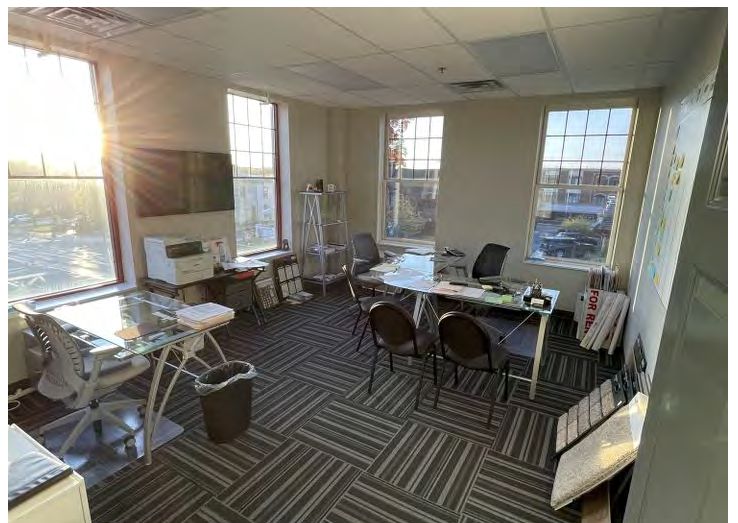
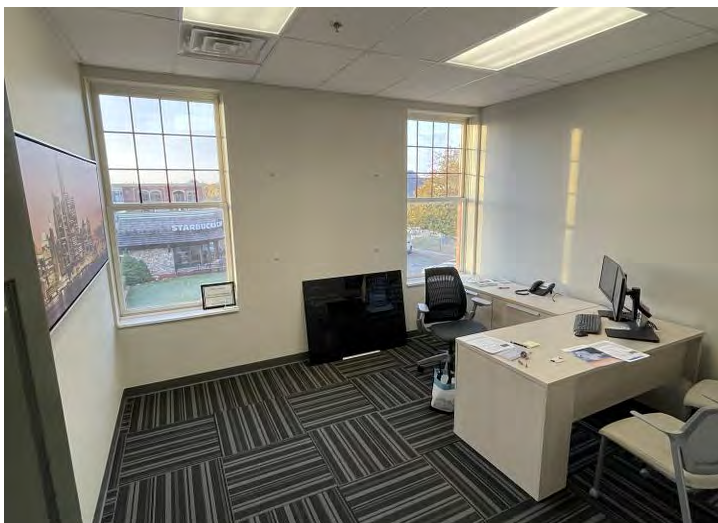
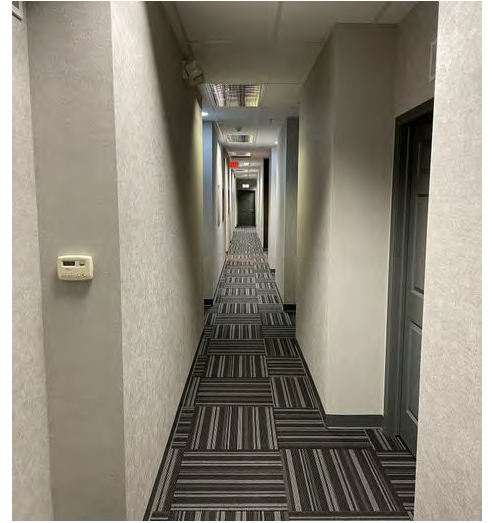
Many residents can walk to downtown, which features specialty shops, theaters, restaurants and personal services. Parks and well-preserved landmarks make this city a destination for tourists, and people who like to walk, bike or jog through scenic areas. .

LOCATION DETAILS

Market	Detroit
Sub Market	Southern I-275 Corridor
County	Wayne
Cross Streets	Main St & Hutton St
Street Parking	Yes North Side of Street
Road Type	Paved
Market Type	Medium
Nearest Highway	I-275

311 E MAIN ST, NORTHVILLE, MI 48167 // FOR LEASE

ADDITIONAL PHOTOS



P.A. COMMERCIAL
Corporate & Investment Real Estate

Matthew Schiffman CEO/MANAGING MEMBER
D: 248.281.9907 | C: 248.943.6449
matt@pacommercial.com

Mike Gunn SENIOR ASSOCIATE
D: 248.331.0202 | C: 248.924.7499
mike@pacommercial.com

311 E MAIN ST, NORTHVILLE, MI 48167 // FOR LEASE

RETAILER MAP



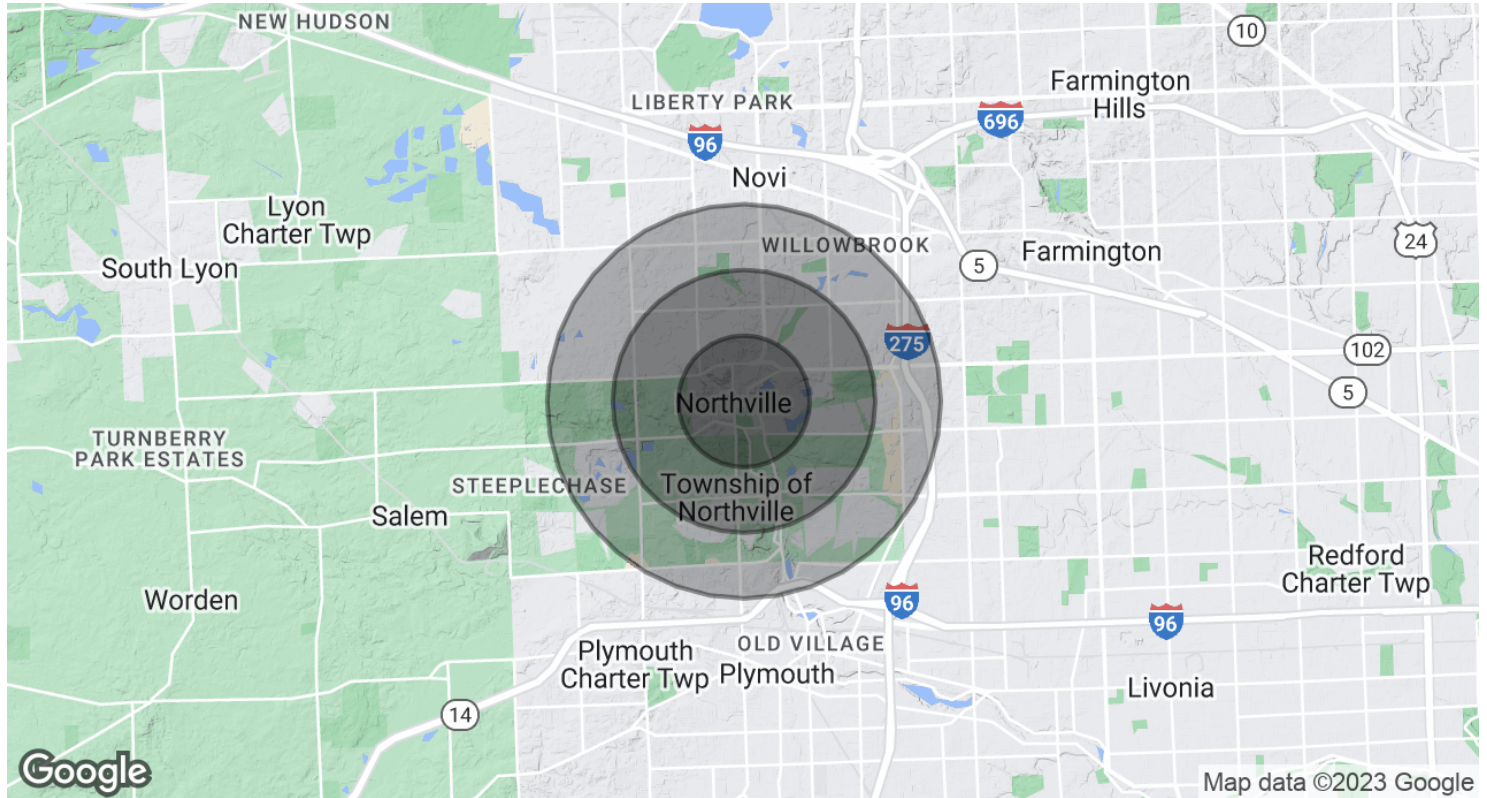
311 E MAIN ST, NORTHVILLE, MI 48167 // FOR LEASE

LOCATION MAP



311 E MAIN ST, NORTHVILLE, MI 48167 // FOR LEASE

DEMOGRAPHICS MAP & REPORT



POPULATION	1 MILE	2 MILES	3 MILES
Total Population	8,558	28,809	61,748
Average Age	43.4	45.3	44.9
Average Age (Male)	43.5	44.3	42.9
Average Age (Female)	44.0	46.1	45.8

HOUSEHOLDS & INCOME	1 MILE	2 MILES	3 MILES
Total Households	4,266	12,467	25,467
# of Persons per HH	2.0	2.3	2.4
Average HH Income	\$131,004	\$152,904	\$149,973
Average House Value	\$289,339	\$373,401	\$386,775

* Demographic data derived from 2020 ACS - US Census

311 E MAIN ST, NORTHVILLE, MI 48167 // FOR LEASE



FOR MORE INFORMATION, PLEASE CONTACT:



Matthew Schiffman
CEO/MANAGING MEMBER
D: 248.281.9907
C: 248.943.6449
matt@pacommercial.com



Mike Gunn
SENIOR ASSOCIATE
D: 248.331.0202
C: 248.924.7499
mike@pacommercial.com

P.A. Commercial
26555 Evergreen Road, Suite 1500
Southfield, MI 48076

P: 248.358.0100
F: 248.358.5300

pacommercial.com

Follow Us!



P.A. COMMERCIAL
Corporate & Investment Real Estate